



TRAFFORD COUNCIL

AGENDA PAPERS FOR TRAFFORD COVID-19 PUBLIC ENGAGEMENT BOARD

Date: Wednesday, 20 October 2021

Time: 10.00 am

Place: <https://www.youtube.com/channel/UCjwblOW5x0NSe38sgFU8bKg>

A G E N D A		Pages
1.	ATTENDANCES To note attendances, including officers, and any apologies for absence.	
2.	DECLARATIONS OF INTEREST Members to give notice of any interest and the nature of that interest relating to any item on the agenda in accordance with the adopted Code of Conduct.	
3.	MINUTES To receive and, if so determined, to approve as a correct record the Minutes of the meeting held on 6 th October 2021.	1 - 4
4.	UPDATE ON THE CURRENT COVID-19 SITUATION IN TRAFFORD To receive an update from the Director of Public Health.	5 - 18
5.	10 POINT PLAN (a) Mass Testing To receive a verbal update from the Strategic Testing Lead. (b) Contact Tracing and Outbreak Management To receive a verbal update from a Consultant in Public Health. (c) Mass Vaccination To receive a verbal update from the Deputy Medical Director, Trafford	

CCG.

(d) **Community Engagement**

To receive a verbal update from the Head of Regulatory Services.

6. **PUBLIC ENGAGEMENT BOARD ACTIVITY**

For all Board Members to provide updates on any activity pertaining to the remit of the Board not covered elsewhere on the agenda.

7. **ANY OTHER BUSINESS**

To consider any other items of business not on the agenda which need to be considered by the Board before the next confirmed meeting.

Sara Saleh

Deputy Chief Executive

Membership of the Committee

Council Leader or named Elected Member, nominated leads from opposition parties
VCSE representatives – including specialists relating to key population groups (older people; BAME; children; mental health , Learning Difficulties), Partnerships lead, Communications lead, Director of Public Health, Director of Adult Social Services, Director for Children’s Services, Neighbourhood representatives, Clinical Commissioning Group representative, Trafford Local Care Organisation representative, Healthwatch Representative

Further Information

For help, advice and information about this meeting please contact:

Fabiola Fuschi,

Tel: 07813 397611

Email: Fabiola.fuschi@trafford.gov.uk

This agenda was issued on **18th Oct 2021** by the Legal and Democratic Services Section, Trafford Council, Trafford Town Hall; Talbot Road, Stretford, Manchester, M32 0TH

WEBCASTING

This meeting will be filmed for live and / or subsequent broadcast on the Council’s website and / or YouTube channel <https://www.youtube.com/user/traffordcouncil>
The whole of the meeting will be filmed, except where there are confidential or exempt items.

If you make a representation to the meeting you will be deemed to have consented to being filmed. By entering the body of the Committee Room you are also consenting to being filmed and to the possible use of those images and sound recordings for

Trafford Covid-19 Public Engagement Board - Wednesday, 20 October 2021

webcasting and/or training purposes. If you do not wish to have your image captured or if you have any queries regarding webcasting of meetings, please contact the Democratic Services Officer on the above contact number or email democratic.services@trafford.gov.uk

Members of the public may also film or record this meeting. Any person wishing to photograph, film or audio-record a public meeting is requested to inform Democratic Services in order that necessary arrangements can be made for the meeting. Please contact the Democratic Services Officer 48 hours in advance of the meeting if you intend to do this or have any other queries.

This page is intentionally left blank

Document Pack Page 1
Trafford Covid-19 Public Engagement Board

Wednesday 6th October 2021 – 10:00 a.m. – Virtual meeting

Present:

Councillor Freeman (Chair)	Executive Member for Covid-19 Recovery and Reform
Councillor Newgrosh	Member of the Health Scrutiny Committee, Trafford Council
Councillor Acton	Chair of the Overview and Scrutiny Committee, Trafford Council
Councillor Blackburn	Ward Councillor, Trafford Council
Councillor Welton	Ward Councillor, Trafford Council
Councillor Cordingley	Member of the Health Scrutiny Committee, Trafford Council
Helen Gollins	Consultant in Public Health, Trafford Council
Ellie Caddick	Covid-19 Communications Lead, Trafford Council
Kirsty Johnson	Covid-19 Project Manager, Trafford Council
Andrew Latham	Chief Officer, HealthWatch Trafford
Khan Moghal	Chair, Voice of BME Trafford
Dorothy Evans	Voluntary, African Caribbean Care Group
George Devlin	Lay Member for Patient and Public Participation, Trafford CCG
Rebecca Demaine	Associate Director of Commissioning – Primary Care, Trafford CCG
Catherine O'Connor	Strategic Neighbourhood Engagement Lead, Trafford Council
Ben Wilmott	Covid-19 Senior Project Manager, Trafford Council
Louise Wright	Sport Relationship Manager, Trafford Council
Molly Shaw	Governance Services, Trafford Council
Alexander Murray	Governance Officer, Trafford Council

	Item	Decision / Action	Key Person for Action
1.	Welcome and apologies	Apologies were received from Nigel Smith, Sara Radcliffe, Michelle Hill, Councillor Chilton and Joanne Gibson.	
2.	Minutes	The minutes of the meeting 22 nd September 2021 were agreed as an accurate record.	
3.	Membership	There had been no changes to the Membership since the last meeting.	
4.	Update on the current Covid-19 situation in Trafford	<p>The Board agreed to note the update.</p> <p>The following messages were shared with the Board:</p> <ol style="list-style-type: none"> 1. The rates across Trafford were the highest they've ever been at around 530 per 100,000; 2. The rates in people over 60 had declined; 3. 11-14 year olds had the highest rates but schools were working hard to keep schools safe; 4. There was a new Greater Manchester Schools Framework which outlined new measures for schools; 5. That it was important to keep children off school if 	All

		<p>there was a positive case in the household and do a PCR test on day 3-5 in order to return to school;</p> <p>6. People needed to take additional care (even if vaccinated) by avoiding crowded places, meeting people outdoors where possible, wearing a mask, keeping up with hand hygiene, and working from home if able.</p>	
5.	Self-Isolation Pathfinder Update	<p>The Board agreed to note the update.</p> <p>The following messages were shared with the Board:</p> <ol style="list-style-type: none"> 1. General support remained across Trafford even though the pathfinder had ended through local welfare schemes; 2. The self-isolation support grant had been extended until March. 	All
6.	10POINT ACTION PLAN		
6a.	Mass Testing	<p>The Board agreed to note the update.</p> <p>The following messages were shared with the Board:</p> <ol style="list-style-type: none"> 1. Additional PCR testing was being carried out at schools in Trafford with a high number of positive cases; 2. Testing at home for school children should continue twice weekly until the end of term; 3. The importance of following the instructions of Lateral Flow tests as there were a variety of tests available which worked in different ways; 4. Testing at home twice weekly with Lateral Flow tests should continue. 	All
6b.	Contact Tracing and Outbreak Management	<p>The Board agreed to note the update.</p> <p>The following messages were shared with the Board:</p> <ol style="list-style-type: none"> 1. The team were working with schools who met the outbreak threshold and carrying out risk assessments; 2. There was currently 26 schools in Trafford with temporary extra measures in place; 3. The team had reached 63% of the Level 2 cases; 4. There was low activity across workplaces with only 36 cases across 20 business settings. 	All
6c.	Mass Vaccination	<p>The Board agreed to note the update.</p> <p>The following messages were shared with the Board:</p> <ol style="list-style-type: none"> 1. The 'Booster' and Flu vaccination programmes 	All

		<p>were live;</p> <ol style="list-style-type: none"> 2. People in the eligible cohorts were being contacted through the national booking system or their GP; 3. The booster vaccine was Pfizer; 4. The 12-15 year old school programme had around 50% uptake and it was important to encourage parents to consent for their child to be vaccinated. 	
6d.	Update and escalations from the COVID-19 Community Engagement Group	<p>The Board agreed to note the update.</p> <p>The following messages were shared with the Board:</p> <ol style="list-style-type: none"> 1. The focus was currently on vaccine equity and the team were working with Public Health to work with the homeless and people with mental health problems; 2. Work was being carried out to encourage vaccine uptake in low uptake areas; 3. The Communications team had delivered some messaging aimed at children’s sports club around testing and social distancing; 4. The team were working on a winter engagement programme which would be launching soon; 5. Questionnaires were being carried out with unvaccinated people to understand their reasoning for not being vaccinated. 	N/A
7.	Public Engagement Board Activity and Feedback	None	
8.	Any Other Business	None	
9.	Date of Next Meeting	Wednesday 20 th October 2021 at 10:00 a.m.	

This page is intentionally left blank

Public Engagement Board

COVID-19 Programme Team

CLT Lead: Helen Gollins, Director Public Health Trafford

20 October 2021

Data surveillance update paper to Public Engagement Board

Report Summary:

This paper provides an update on the current data position for COVID-19 within Trafford and provides comparative information with other GM localities. Data insights into any potential trends are provided based on best available public health information and intelligence available.

Overview of the current position:

Overview

- There were **1681** confirmed cases during the week ending Wednesday 13 October, with the highest number of cases (**297**) reported on **Thursday 07 October**.
- We have seen a decrease in our 7 days case rate to **708.2/100k** from **785.7/100k** in the previous week. As new data are coming through, there has been a recent reduction in the number of total daily cases and it appears our case rate may drop below **700/100k**.
- Trafford case rate has now dropped outside the national top 10 but remains highest in the GM. Whilst Trafford is experiencing a drop in its case rate, rates are rising across the North West. Trafford's case rate still remains above the North West (**456.5/100k**) and England (**424/100k**) averages.
- Trafford's testing (at **851.8/100k** from **859.5/100k** in the previous week) and positivity (at **12.5%** from **13.3%** in the previous week) rates have dropped from the previous week. Testing and Positivity rates for England and the North West are increasing.

Age Profiles

- Case rates are now starting to drop for all age groups.
- Case rates remain highest for 10-14 year olds (at **2641.9/100k**) but have dropped by **28.2%** when compared to the previous week (**3677/100k**).
- We are seeing signs that daily cases are dropping for residents aged 60+. However, rates have increased from the previous week for this age group (at

263.1/100k from **213.1/100k**). We will actively monitor our case rates in this age group.

- PCR testing rates are dropping but remain highest for 0-14 year olds.

Geography

- Case rates have dropped for most wards (**14/21**).
- Case rates remain highest in the West of the borough, but have dropped for each of the **4** wards in Trafford West.
- Case rates are highest for the wards of Flixton (**1005.5/100k**), Urmston (**1004.2/100k**), Davyhulme West (**899.1/100k**), Timperley (**878.8/100k**) and Sale Moor (**849.2/100k**).
- The Central locality has seen the biggest increase in cases during the most recent week, increasing by **23.1%** for Priory and **22.7%** for Sale Moor. We are also seeing highest positivity rates in Sale Moor.

Hospital Activity

- There were **164** COVID-19 admissions during the week ending Sunday 10 October compared with **146** COVID-19 admissions during the previous week (Including Manchester University Foundation Trust, Stockport Foundation Trust, and Warrington & Halton Teaching Hospitals Foundation Trust).

Public Health Concern

Trafford's case rate reached highest in the country over the past 7 days, peaking at a rate of **846.8/100k** (for the 7 days up to 09 October), which is well above our peak (**549.8/110k**) during the 3rd wave in summer 2021. Early September saw a sharp rise in testing and subsequent positive cases for young persons below the age of 17 that caused a gradual increase in Trafford's case rate throughout the month of September. Trafford's case rate spiked in early October, as we started to see an increase in the number of adults (18+ years) testing positive, in addition to the continuing increase in young persons testing positive. Trafford's testing rate over the past two weeks has been at its highest since the start of the pandemic, this has allowed effective methods of case findings, particularly for positive cases in educational settings, where Lateral Flow Tests are routinely conducted. The recent surge in cases has been heavily concentrated in the West of the borough and particularly for school age residents.

Our case rate remains high, despite recent data (over the past few days) showing a drop in the number of residents testing positive. Our immediate concern is that we go through further periods of increasing community transmission that spreads into other geographical areas, our care homes and population groups more vulnerable to adverse outcomes of the virus (aged 60+ and/or with pre existing health conditions).

The successful roll-out of COVID-19 vaccination has helped weaken the link between infection and hospital admissions/COVID-19 mortality, however there are still over 1/5 of eligible residents not vaccinated with at least 1 dose. Despite the successful roll out of

the vaccine programme, we have seen inequalities in uptake, specifically linked to decreasing age and geographical areas with highest levels of deprivation. Vaccines offer protection but risk of infection is still present if borough-wide transmission is not controlled.

We want to bring Trafford's case rates down as quickly as we can to protect our care homes and our vulnerable population groups. This would also help us protect those who are not at serious risk/harm from long term consequences of COVID such as long COVID. Controlling and limiting community transmission, in addition to uptake of both vaccine doses (where applicable) are the most optimal means of preventing long-term harm, particularly in our vulnerable population groups but also for all residents as preventing ill-health in our younger population groups is essential for long term health and well being. We are supporting areas with lower uptake of vaccinations (especially in over 60s) for preventative measures and to improve vaccination uptake.

Outbreak Management and Risk Reduction

Business settings

- We continue to urge all businesses to make their workplaces COVID-19 secure, including ensuring that staff are routinely testing and properly protected when they return to the workplace.
- We are monitoring the impact of events on Covid rates in the borough.

Health & Social Care Settings

- We need to work together to keep our most vulnerable populations protected. We are managing outbreaks in care homes. While some fully vaccinated staff and residents are testing positive, their disease is much milder than in unvaccinated people.
- Trafford have recommended that providers pause indoor visiting by children and young people aged 16 and under. Exceptions include end of life visits, and visits that include outdoor socially distanced visits. This will be reviewed on November 1st.
- We will be encouraging all health and social care settings to continue to use all the current infection prevention and control measures to keep staff and service users safe.

Education & Early Years Settings

- Secondary school pupils should continue with twice weekly LFD testing and all staff/pupils should wear face coverings in communal areas.
- Any children identified as a close contact should have a PCR test. The Outbreak Team has developed and shared a suite of resources with settings to support them.
- School household contacts; children and young people and staff who attend/work in schools and are household contacts should do daily LFD testing for a period of 10 days

- We are continuing to monitor numbers of cases reported through from Early Years settings, fortunately numbers are low, but we would continue to promote vaccination and routine LFD testing.

Contact Officer:

Name: Tom Seery, Public Health Data Surveillance Analyst

Tel: 07929876642

Email: Thomas.seery@trafford.gov.uk

1.0 Vulnerable Population groups

1.1 We have seen case rates increase in our 60+ population over the past 10 days, having one of top ten highest case rates across the country for this age group.

1.2 Table 1 shows that 60+ case rates are highest for the West of the borough and lowest for the Central locality (but have increased most for Trafford Central compared to the previous week).

Table 1. Case Rate (per 100,000) for residents aged 60+ by Locality Trafford, 30 September – 13 October 2021

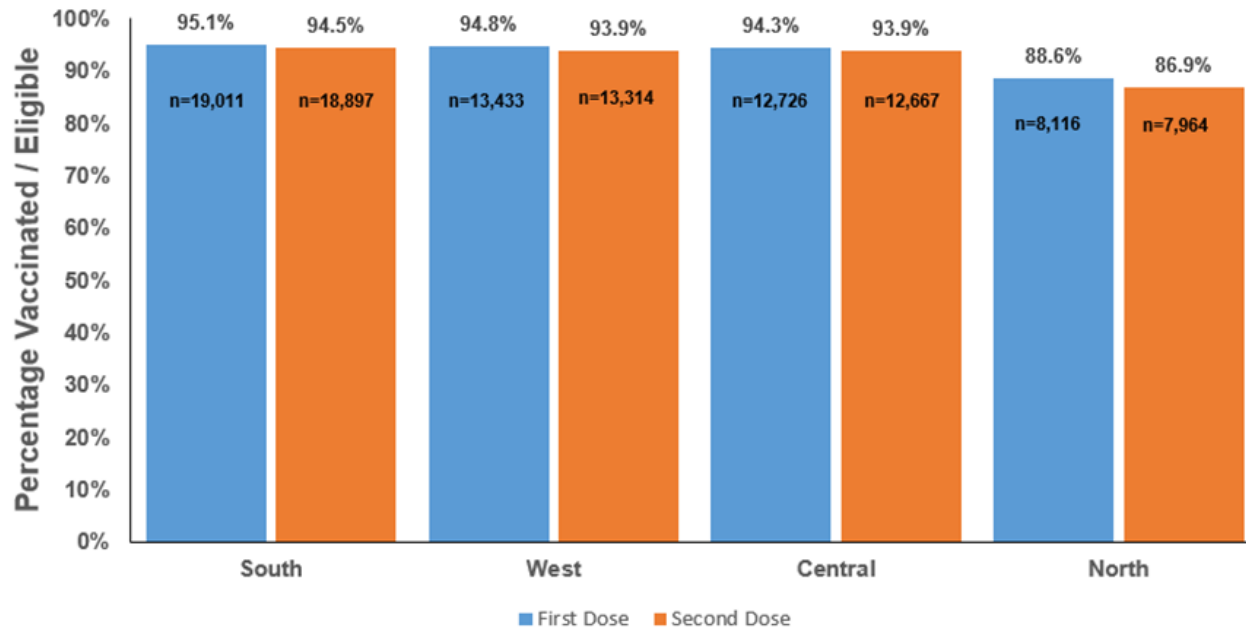
	Previous Week	Current Week	Percentage Change
West	250.4	390.3	55.9
North	295.2	248.0	-15.0
South	221.9	221.9	0.0
Central	99.8	191.9	92.3

1.3 Vaccine uptake (first dose and both doses) is high among our 60+ population, however we are seeing variation between our 4 localities.

1.4 Between localities with the highest and lowest uptake, we are seeing a percentage gap of 7 for first dose uptake, and 8 for second dose uptake.

Figure 1. First and Second dose uptake for residents aged 60 years and over Trafford, up to 11 October 2021

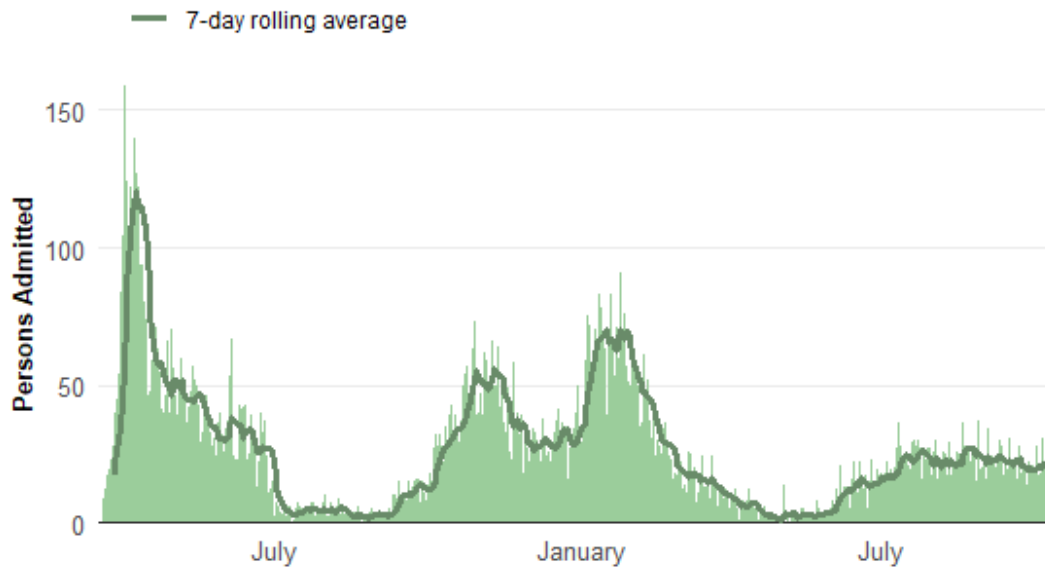
n refers to number of vaccinated residents



1.5 COVID-19 hospital admissions remain constant, however there has been little change in the number of residents (not specific to Trafford residents) admitted to the 3 specified GM hospitals since late July.

1.6 The most recent two weeks (up to October 10th) does show a slight increase in the number of hospital admissions, so we will continue to monitor any week-by-week changes.

Figure 2. Daily Count of COVID-19 Hospital Admissions (including *Manchester University Foundation Trust, Stockport Foundation Trust, and Warrington & Halton Teaching Hospitals Foundation Trust*).
19 March 2020 to 10 October 2021



Source: PHE Coronavirus Dashboard

2.0 Trend of COVID-19 cases within Trafford

2.1 Mid-July saw a sharp reduction in Trafford's case rate, dropping below **300/100k** with less than 100 daily cases being recorded for every 7-day period.

2.2 Case rates remained volatile throughout the month of August and early September, but we started to see a steady rise in cases after mid-September.

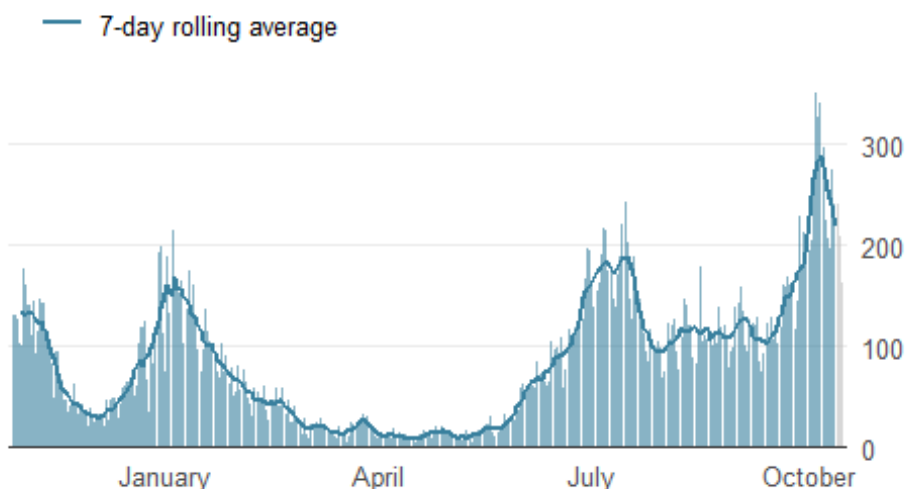
2.3 From October 4th, we began to record more than **300** daily cases on 3 consecutive days.

2.4 Our case rate peaked at a rate of **846.8/100k** for the 7 days up to October 9th, and reached highest in the country.

2.5 The most recent 4 days (up to October 13th) shows a reduction in the number of daily cases, however our case rate still remains high, above a rate of **700/100k**.

Figure 3. Epidemic curve of daily confirmed new cases

Trafford, 29 October 2020 to 15 October 2021



3.0 Age profiles

3.1 We started to see the rate of increase level-off at the end of last week, whilst the number of daily cases are starting to drop for each age group.

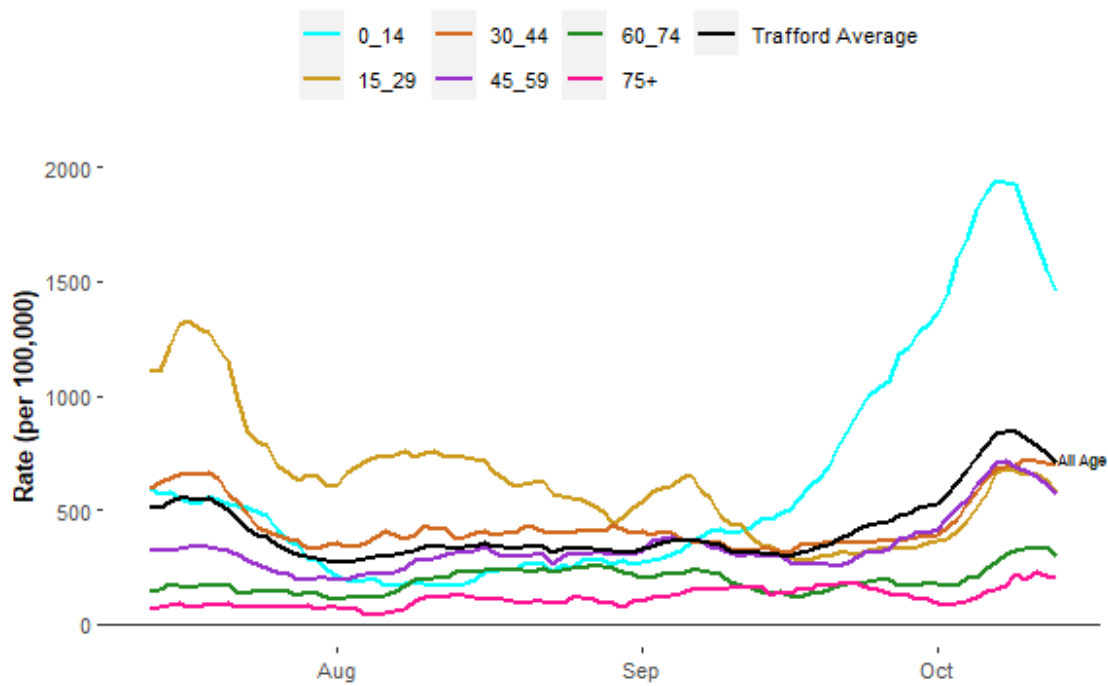
3.2 The biggest reduction when compared to the previous week has occurred in 0-14 year olds (**22.7%**).

3.3 Case rates remain highest for 0-14 year olds (at **1459/100k** from **1887/100k** in the previous week), followed by 30-44 year olds (at **700.9/100k** from **637.6/100k** in the previous week).

3.4 We are starting to see a slight reduction in the number of 60 year olds testing positive, however rates have increased from the previous week (at **263.1/100k** from **213.1/100k** in the previous week).

3.5 Case rates are higher for 60-74 year olds (**299.2/100k**) when compared to residents aged 75+ (**201.2/100k**).

Figure 4. Age-Specific case rate per 100,000 residents (7-day moving)
 Trafford, 15 July to 13 October 2021

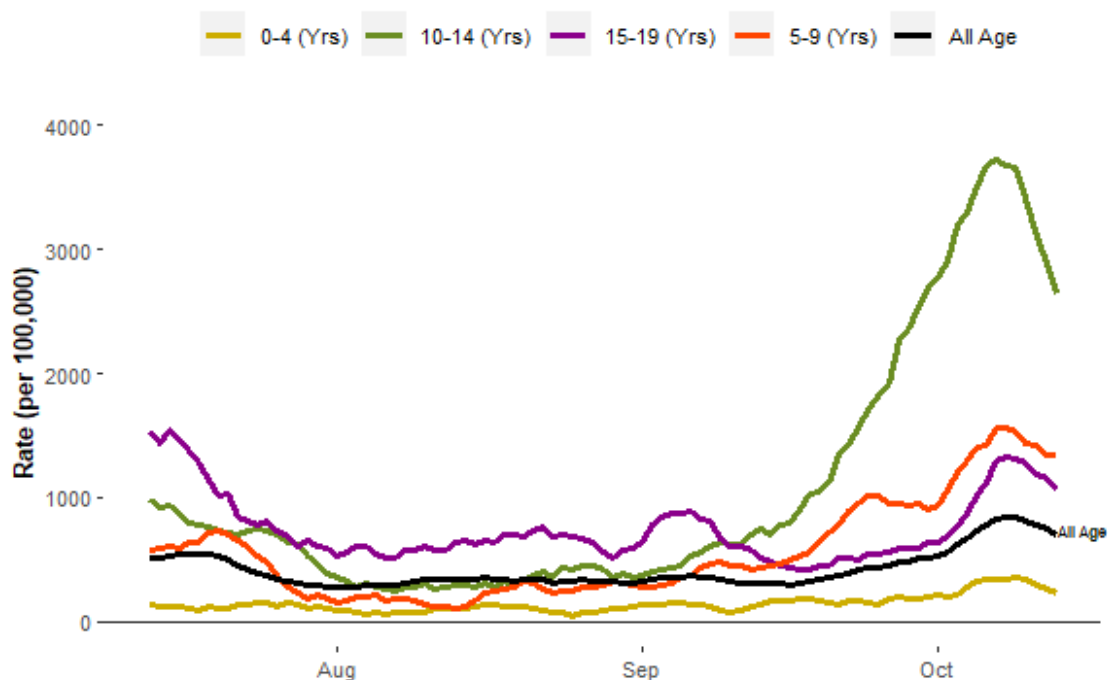


3.6 Case rates are dropping for all young persons below the age of 20.

3.7 Case rates remain highest for 10-14 year olds (**2641.9/100k**) but have have dropped most (**28.2%**) for this age group during the most recent week.

3.8 Case rates are also dropping for 5-9 and 15-19 year olds, however are still above the Trafford average.

Figure 5. School case rate per 100,000 residents (7-day moving)
 Trafford, 15 July to 13 October 2021



4.0 Geographical spread of COVID-19 in Trafford

4.1 Case rates remain highest in the West of the borough, lowest for Trafford North, and have increased most for parts of Trafford Central.

4.2 Rates have dropped for **14** wards, and have increased for **7** wards.

4.3 Case rates are highest for the wards of Flixton (**1005.5/100k**), Urmston (**1004.2/100k**), Davyhulme West (**899.1/100k**), Timperley (**878.8/100k**), and Sale Moor (**849.2/100k**).

4.4 Case rates have increased most for Priory (**23.1%**) and Sale Moor (**849.2/100k**) during the most recent week.

4.5 Case rates have decreased most for Flixton (**-37.6%**) and Stretford (**-35.8%**) during the most recent week.

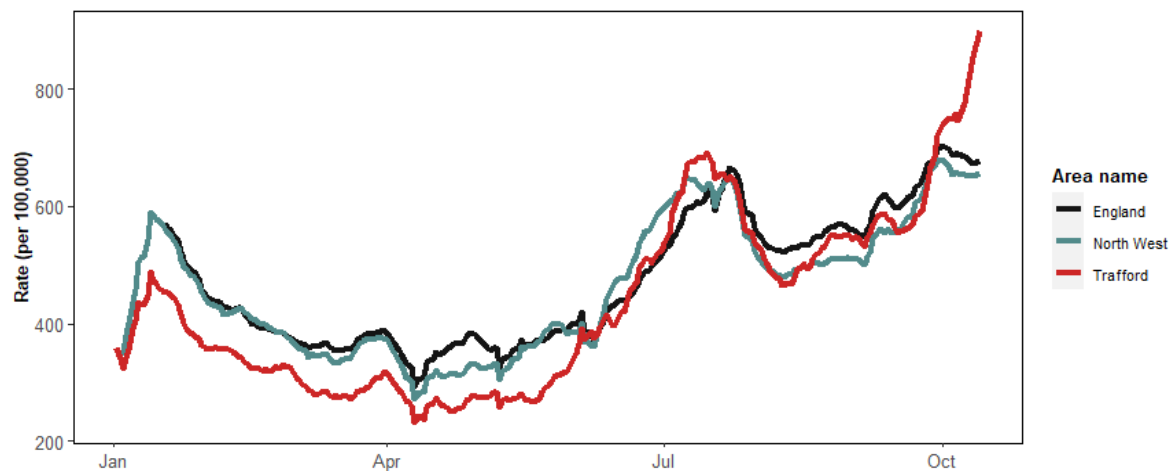
5.0 PCR Testing

5.1 We were seeing a sharp increase in Trafford's testing rate since late September, spiking above the North West and England averages, carrying out **900** daily tests per 100,000 residents at it's peak on October 10th.

5.2 Most recent data shows signs that testing rates are starting to level-off, whilst testing rates for England and the North West are starting to increase.

5.3 We continue to see lowest testing rates in Trafford North, as well as Bucklow-St Martins in Trafford West.

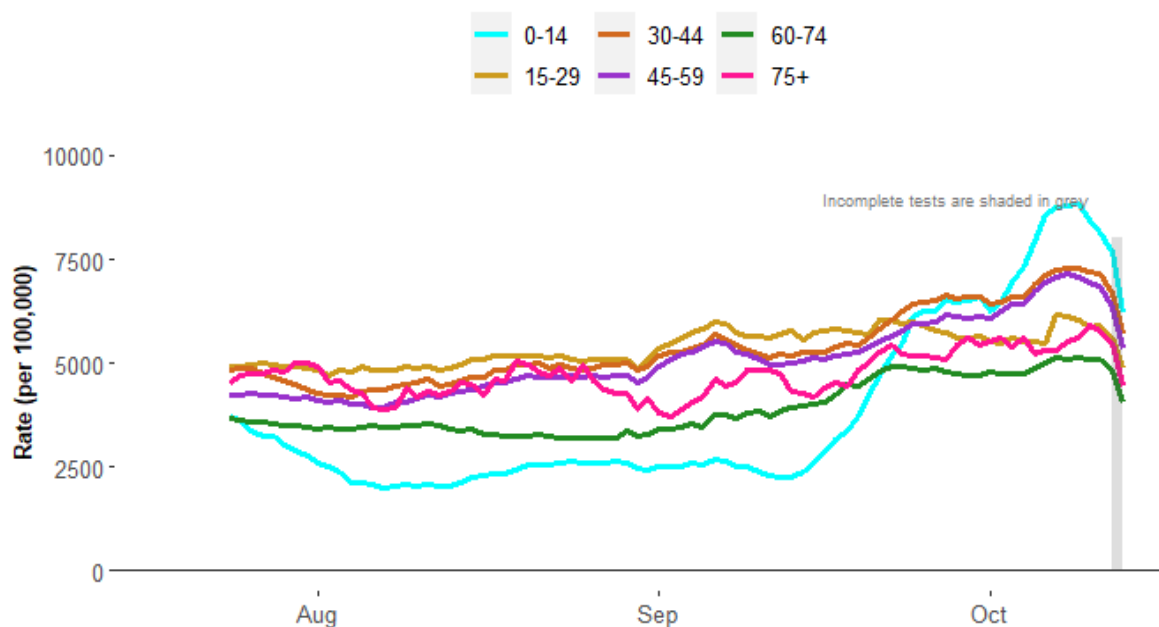
Figure 6. Daily testing rate (7-day average): England, North West, & Trafford
Trafford, 01 January to 13 October 2021



5.4 Testing rates had been lowest for 0-14 year olds throughout the month of August, however we saw a spike in testing (potentially linked to surge in cases for our school age population) in mid-September, carrying on into the month of October and highest amongst all the age groups.

5.5 Most recent data is starting to show a drop in testing rates for all age groups.

Figure 7. Age-Specific Testing rate per 100,000 residents (7-day moving)
 Trafford, 15 July to 13 October 2021



6.0 Positivity

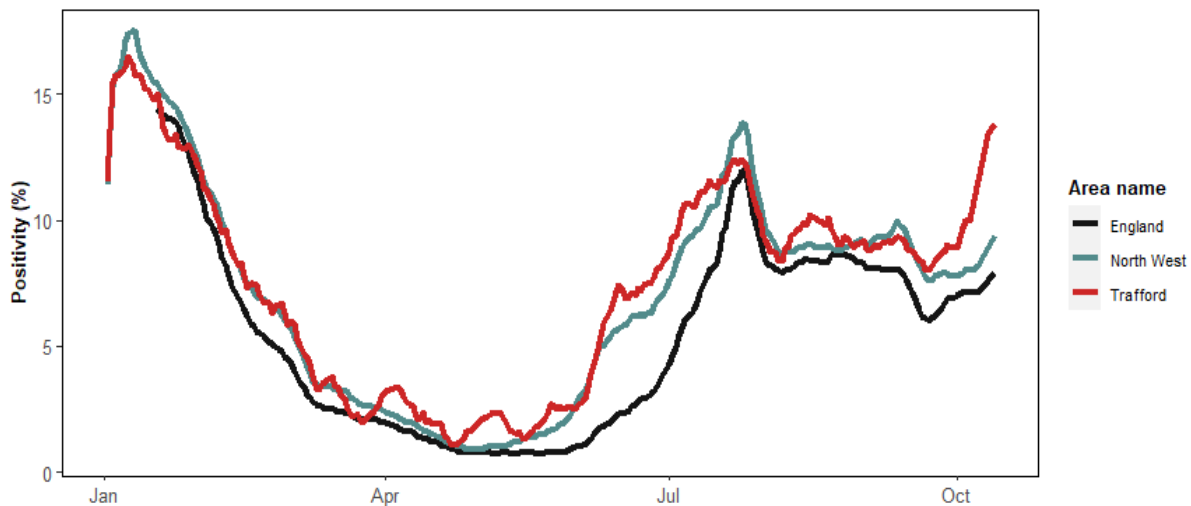
6.1 Positivity rates follow a similar trend to PCR testing rates. We saw a spike in Trafford's positivity rate in late September, reaching as high as **13.8%** on October 9th. However, more recent data shows that positivity rates are dropping.

6.2 As of October 13th, Trafford's 7-day positivity rate sits at **12.5%** which is a decrease from the previous week (**13.3%**). Trafford's positivity rate is above to the North west (**9.9%**) and England average (**8.8%**) averages.

6.3 Current positivity rates are highest and have increased most (from the previous week) for Sale Moor.

Figure 8. 7-day Positivity rate: England, North West, & Trafford

Trafford, 01 January to 13 October 2021



7.0 Comparative data of COVID-19 cases within the local authorities of Greater Manchester

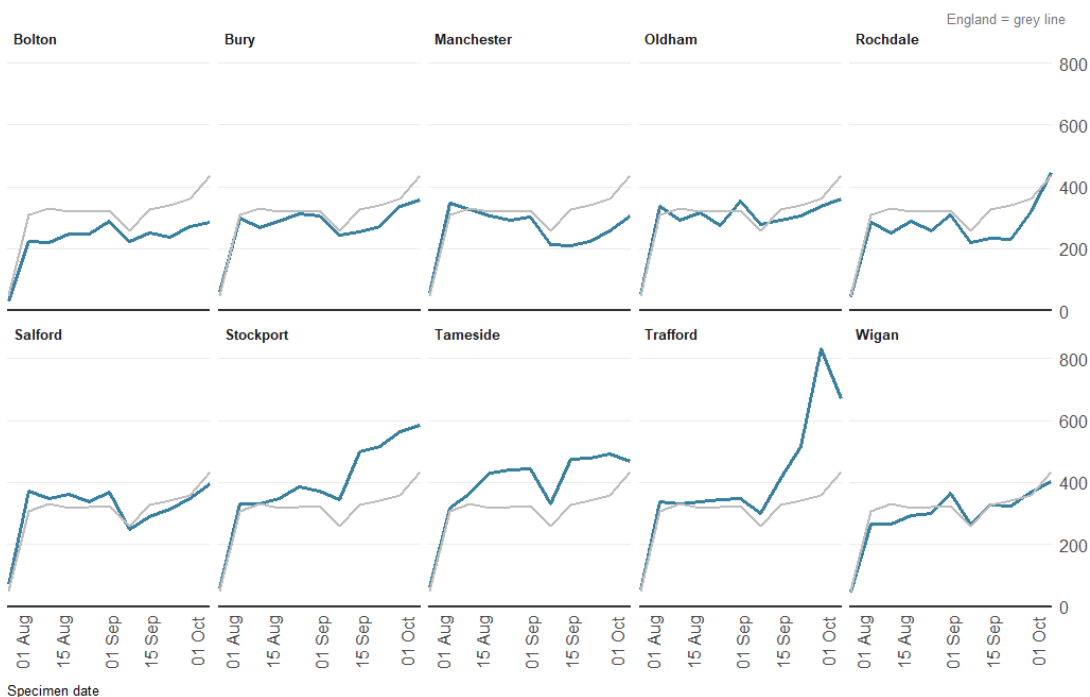
7.1 Some GM boroughs (Trafford included) started to see a slight rate increase during the second week of August, however those rates started to stabilise.

7.2 Most GM boroughs started to see a slight rate increase during September, however Trafford's case rate continued to rise throughout the whole month and saw even further increases during the beginning of October.

7.3 We are starting to see a reduction in Trafford's case rate, although still highest across the ten GM boroughs.

7.4 All other GM boroughs apart from Bury are seeing a rise in cases when compared to the previous week.

Figure 9. Weekly incidence per 100,000 population by local authority
Greater Manchester, 07 August to 13 October 2021



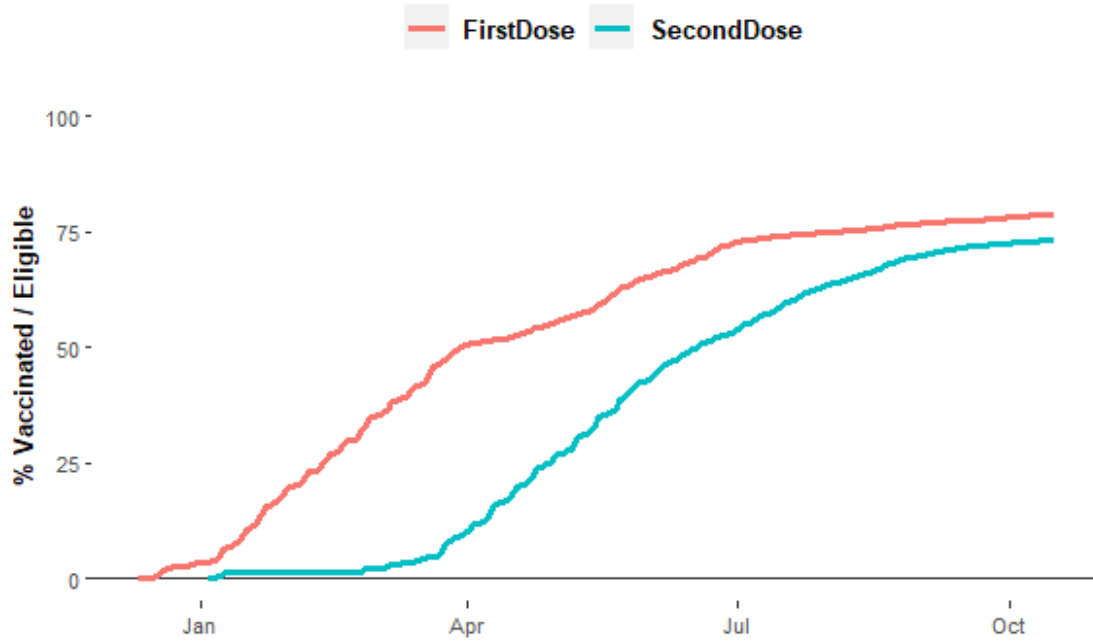
8.0 Vaccinations

8.1 The total percentage of Trafford residents (Aged 12+) administered their first vaccine dose on **Saturday 16-10-2021** was **78.9%**.

8.2 The total percentage of Trafford residents (Aged 12+) administered both vaccine doses on **Saturday 16-10-2021** was **73.2%**.

Figure 10. Running total of first and second dose vaccines for Trafford residents (12 years and above)

Trafford, 09 December to 16 October 2021



Source: COVID-19 Situational Awareness Explorer

8.3 Vaccine uptake is lowest In Trafford North and highest for Trafford South.